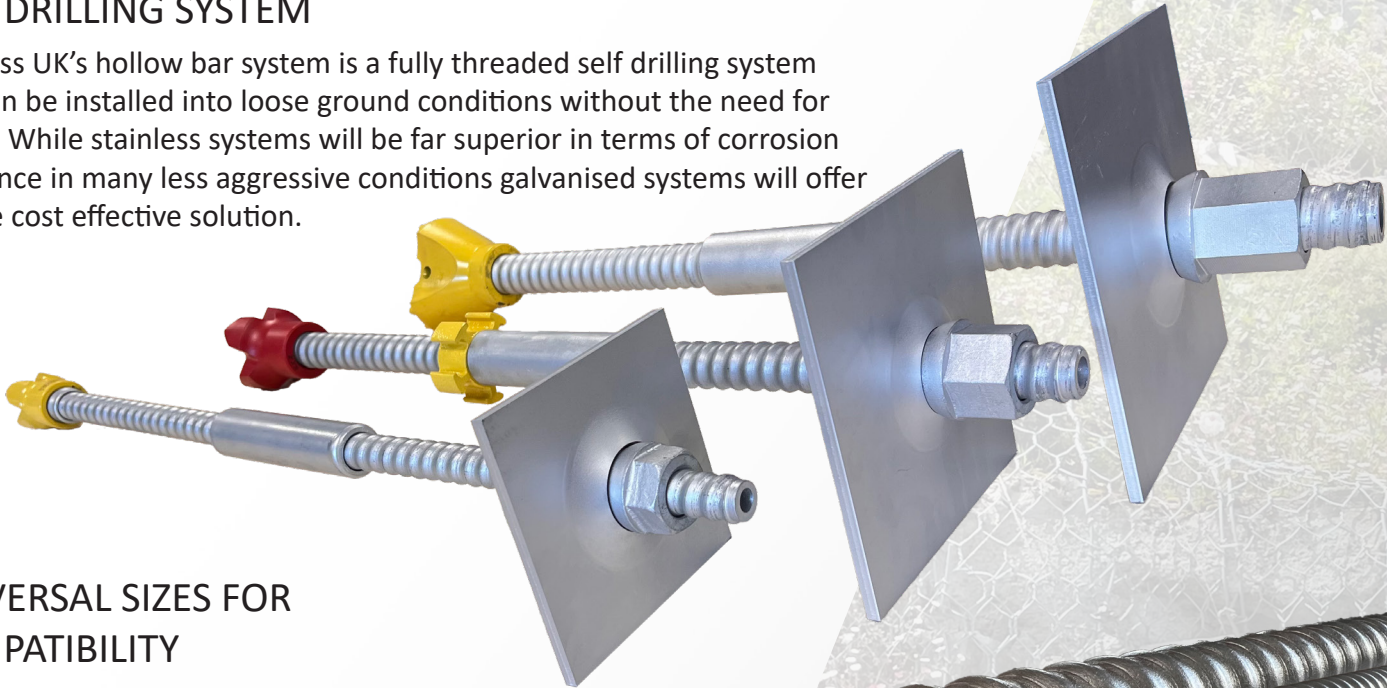


# GALVANISED SELF DRILLING HOLLOW BAR ANCHORS

To complement our stainless hollow bar anchors Stainless UK are introducing a full range of galvanised hollow bar anchors with a minimum 85 micron coating thickness.

## SELF DRILLING SYSTEM

Stainless UK's hollow bar system is a fully threaded self drilling system that can be installed into loose ground conditions without the need for casing. While stainless systems will be far superior in terms of corrosion resistance in many less aggressive conditions galvanised systems will offer a more cost effective solution.



## UNIVERSAL SIZES FOR COMPATIBILITY

The bars are fully threaded with a cold rolled ISO standard left hand rope thread compatible with most drilling rigs. Bars can be supplied in stock lengths and cut to length on site, or in shorter lengths to allow ease of handling.

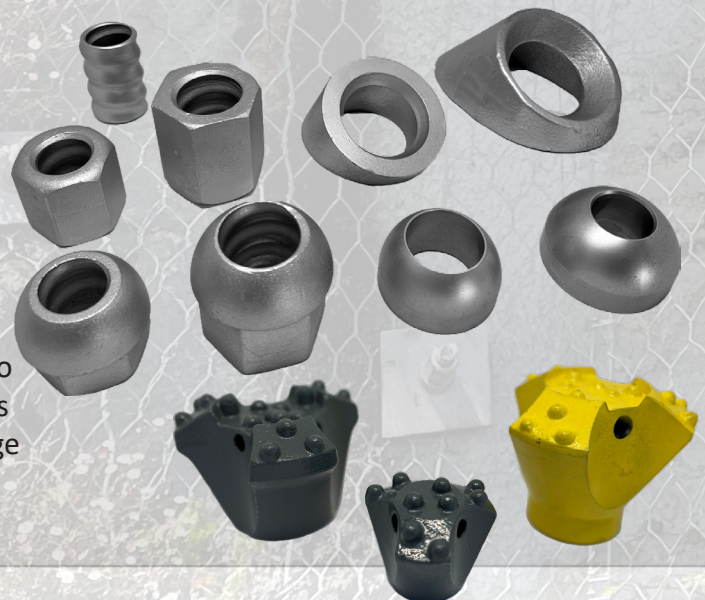


## LOAD BEARING COMPONENTS

**Couplers** are designed to transfer the system load, with a central shoulder to ensure the end faces of the bars fully bear on each face and thread lengths are designed to transfer the full load in tension.

**Nuts** designed to transfer the full load of the end plate into the hollow bar. Nuts can be supplied with a domed end to be used with a dished plate to allow for misalignment or as a standard hexagon to be used with a flat plate.

**Plates** can be supplied to suit individual project requirements and will be dependent on application and ground conditions.



## DRILL BITS, ADAPTERS & ACCESSORIES

A full range of drill bits & adaptor sleeves are available to suit ground conditions and application. Other accessories can be supplied on request including centralisers & wedge bosses.

# GALVANISED SELF DRILLING HOLLOW BAR ANCHORS

## Galvanised Hollow Bar Product Data

Product	Model	Nominal Dia. (mm)	Stock Length* (mm)	Nom. Outer Dia. (mm)	Internal Dia. (mm)	Ultimate Tension Capacity (kN)	Yield Tension Capacity (kN)	A elongation (%)	Ag <sub>t</sub> (%)	Weight (kgs/m)
Hollow Bar	R25	25	1500 & 3000	24.7	14	200	150	≥8%	≥5%	2.35
	R32N	32	1500 & 3000	31.3	18.5	280	230			2.95
	R32S	32	1500 & 3000	31.3	15	360	280			3.50
	R32S1	32	1500 & 3000	31.3	12	405	320			4.00
	R38N	38	1500 & 3000	38	19	500	400			4.95
	R38S	38	1500 & 3000	38	15	550	450			5.90

\* Other Lengths are available on request

Fittings				
Product	Size	Outer Dimension (mm)	Length (mm)	Weight (Kgs)
Coupler	25	∅36	150	0.66
	32	∅42	190	1.01
	38	∅51	220	1.68
Full Nut	25	41 (A/F)	40	0.31
	32	46 (A/F)	45	0.37
	38	50 (A/F)	60	0.47
Domed Nut	25	41 (A/F)	40.5	0.31
	32	46 (A/F)	45	0.38
	38	52 (A/F)	60	0.61
Product	Size	Dimensions (mm)	Thickness (mm)	Weight (Kgs)
Domed Plate	25	200 x 200	10	2.94
	32	200 x 200	12	3.52
	38	200 x 200	12	3.6
Product	Size	Outer Dimension (mm)	Length (mm)	Weight (Kgs)
Wedge Boss	25-38	122	70	1.00

Drill Bits				
Size	Type	Outer Dia (mm)	Description	Typical Applications
SSR32/51	EXX	51	Cross Bit with Tungston Carbide Inserts	Softer sedimentary rocks such as marls, mudstones, siltstone
SSR32/76	EXX	76		
SSR38/76	EXX	76		
SSR38/100	EXX	100		
SSR38/130	EXX	130		
SSR32/51	ES-F	51		
SSR32/76	ES-F	76		
SSR38/76	ES-F	76		
SSR38/90	ES-F	90		
SSR38/115	ES-F	115		
SSR32/51	ESS-F	51	Hardened Steel Button Bit with Tungston Carbide inserts	Weathered rock, stone walls, rubble
SSR32/76	ESS-F	76		
SSR38/76	ESS-F	76		
SSR38/90	ESS-F	90		
SSR38/115	ESS-F	115		

Accessories				
Product	Size	Outer Dia (mm)	Length (mm)	Weight (kg)
Adaptor Sleeve	25/32	32	50	0.10
Centraliser	32	72	30	0.27
	38	78	30	0.28

